

HIV PREVENTION

In the South

CDC allocates **HIV resources** to **populations most affected** by HIV.

CDC'S DOMESTIC HIV FUNDING TO THE SOUTH

2017 | **\$128M** for Prevention Programs | **\$22M** for Surveillance | **\$214M** total HIV Funding



Funding for **state and local health departments** is CDC's **most significant investment in HIV prevention.**



Funding for **community-based organizations** complements and extends the reach of HIV prevention efforts.



CDC **increased funding** to health departments and CBOs **in the South by \$36 million** from 2010 to 2017.



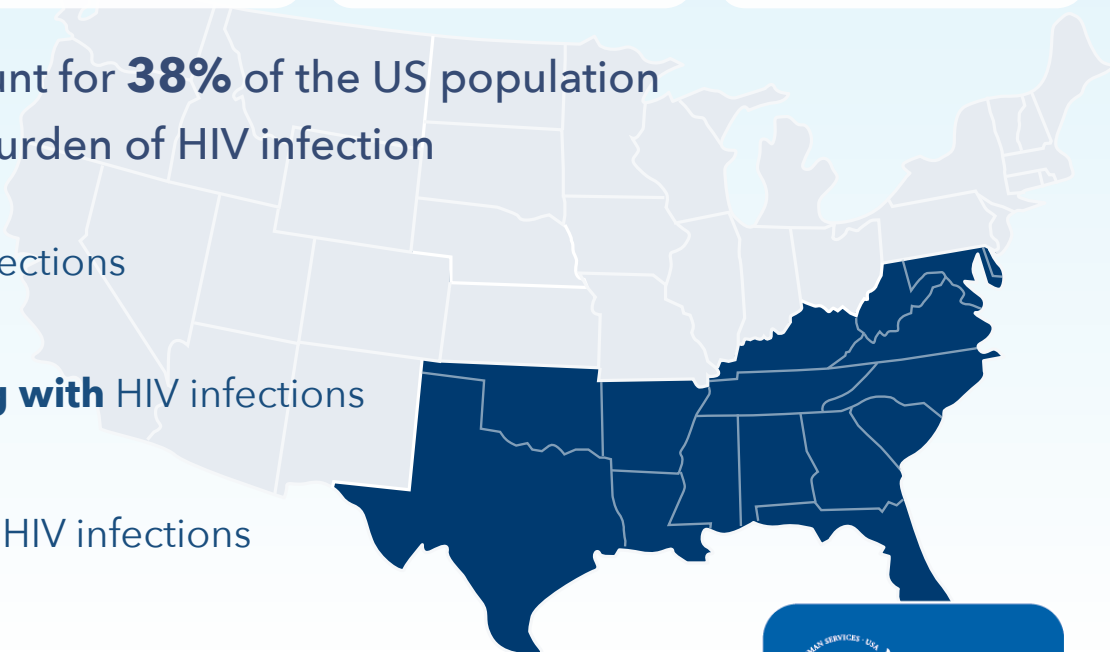
CDC funds **demonstration projects** that test practical, community-driven prevention solutions among people most affected by HIV.

Southern states account for **38%** of the US population but bear the highest burden of HIV infection

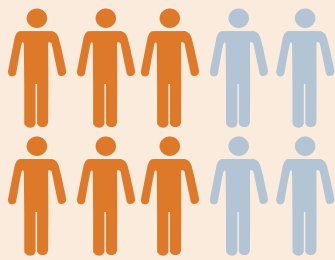
51% of **annual** HIV infections

45% of **persons living with** HIV infections

51% of **undiagnosed** HIV infections



BLACKS/AFRICAN AMERICANS



59% of all **Black MSM** living with diagnosed HIV are in the South.



Of all **women** living with diagnosed HIV in the South, **71%** are **Black women**.

RURAL



23% of new HIV diagnoses in the South are in **suburban and rural areas** - more than any other region.

DEATHS

3X

In the South, people living with diagnosed HIV are **3 times as likely to die** as those living with HIV in some other states.

OPIOID CRISIS



The **nation's opioid crisis** is putting people at risk of **HIV and hepatitis C** predominately in **non-urban areas**.

68% of **counties** vulnerable to an **HIV or HCV outbreak** among people who inject drugs are found in the South.



2018 HIV FUNDING AWARDED FOR INTEGRATED HIV PREVENTION AND SURVEILLANCE PROGRAM

State	Award Amount	State	Award Amount
Texas Total	\$ 29,444,066	Maryland Total	\$ 12,124,971
Texas	\$ 20,772,433	Maryland	\$ 7,887,181
Houston	\$ 8,671,633	Baltimore	\$ 4,237,790
Oklahoma	\$ 2,254,311	Delaware	\$ 1,353,326
Arkansas	\$ 2,084,560	District of Columbia	\$ 5,835,118
Louisiana	\$ 7,244,981	Virginia	\$ 8,281,766
Mississippi	\$ 3,508,228	North Carolina	\$ 10,962,335
Alabama	\$ 4,807,660	South Carolina	\$ 6,116,419
Tennessee	\$ 6,210,435	Georgia	\$ 17,697,095
Kentucky	\$ 2,591,200	Florida	\$ 38,904,419
West Virginia	\$ 1,097,367		

(Subject to availability of funds)